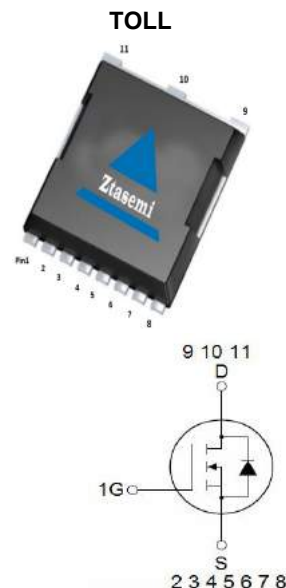


Features

- N-Channel
- Low grid charge
- Low reverse transmission capacitance
- Fast switching speed
- Pb-free lead plating
- 100% EAS Tested

V_{DS}	40	V
$R_{DS(on),TYP}@ V_{GS}=10V$	0.83	m Ω
I_D	250	A



Part ID	Package Type	Marking	Packing
ZTG008N04L	TOLL	ZTG008N04L	2000pcs/Reel

Absolute Maximum Ratings $T_A = 25^\circ\text{C}$, unless otherwise specified

Symbol	Parameter	Rating	Unit	
Common Ratings ($T_c=25^\circ\text{C}$ Unless Otherwise Noted)				
V_{GS}	Gate-Source Voltage	± 20	V	
$V_{(BR)DSS}$	Drain-Source Breakdown Voltage	40	V	
T_J	Maximum Junction Temperature	175	$^\circ\text{C}$	
T_{STG}	Storage Temperature Range	-55 to 175	$^\circ\text{C}$	
I_{DM}	Drain Current-Continuous@ Current-Pulsed	$T_c = 25^\circ\text{C}$ 1000	A	
Mounted on Large Heat Sink				
I_D	Drain Current-Continuous	$T_c = 25^\circ\text{C}$	250	A
		$T_c = 100^\circ\text{C}$	170	A
P_D	Maximum Power Dissipation	300	W	
$R_{\theta JC}$	Thermal Resistance-Junction to Case	0.5	$^\circ\text{C}/\text{W}$	
Drain-Source Avalanche Ratings				
EAS	Avalanche Energy, Single Pulsed (Note 1)	1690	mJ	

Electrical Characteristics (T_J=25°C unless otherwise noted)

Symbol	Parameter	Condition	Min	Typ	Max	Unit
Static Electrical Characteristics @ T_J=25°C (unless otherwise stated)						
V(BR)DSS	Drain-Source Breakdown Voltage	V _{GS} =0V, I _D =250μA	40	--	--	V
I _{DSS}	Zero Gate Voltage Drain Current	V _{DS} =40V, V _{GS} =0V	--	--	1	μA
I _{GSS}	Gate-Body Leakage Current	V _{GS} =±20V, V _{DS} =0V	--	--	±100	nA
V _{GS(th)}	Gate Threshold Voltage	V _{DS} =V _{GS} , I _D =250μA	2.2	3.0	3.8	V
R _{DS(on)}	Drain-Source On-State Resistance	V _{GS} =10V, I _D =100A	--	0.83	1.0	mΩ
Dynamic Electrical Characteristics @ T_J = 25°C (unless otherwise stated)						
C _{iss}	Input Capacitance	V _{DS} =20V, V _{GS} =0V, f=1MHz	--	5991	--	pF
C _{oss}	Output Capacitance		--	2780	--	pF
C _{rss}	Reverse Transfer Capacitance		--	108	--	pF
Q _g	Total Gate Charge	V _{DS} =20V, I _D =100A, V _{GS} =10V	--	90	--	nC
Q _{gs}	Gate-Source Charge		--	29	--	nC
Q _{gd}	Gate-Drain Charge		--	18	--	nC
Switching Characteristics (Note 2)						
T _{d(on)}	Turn-on Delay Time	V _{DD} =20V, I _D =100A, R _G =1.6Ω, V _{GS} =10V	--	14	--	ns
T _r	Turn-on Rise Time		--	7.5	--	ns
T _{d(off)}	Turn-Off Delay Time		--	56	--	ns
T _f	Turn-Off Fall Time		--	9.8	--	ns
Source- Drain Diode Characteristics @ T_J = 25°C (unless otherwise stated)						
I _S	Diode Forward Current		--	--	250	A
V _{SD}	Forward on voltage	I _S =100A, V _{GS} =0V	--	--	1.2	V
T _{rr}	Reverse Recovery Time	T _J =25°C, I _S =100A,	--	--	38	ns
Q _{rr}	Reverse Recovery Charge	di/dt=100A/μs	--	--	125	nC

Notes:

- EAS condition : T_J=25°C, V_{DD}=20V, V_G=10V, L=0.5mH, R_G=25Ω
- Guaranteed by design, not subject to production
- These curves are based on the junction-to-case thermal impedance which is measured with the device mounted to a large heatsink, assuming a maximum junction temperature of T_{J(MAX)}=175°C. The SOA curve provides a single pulse rating.

Typical Electrical and Thermal Characteristics

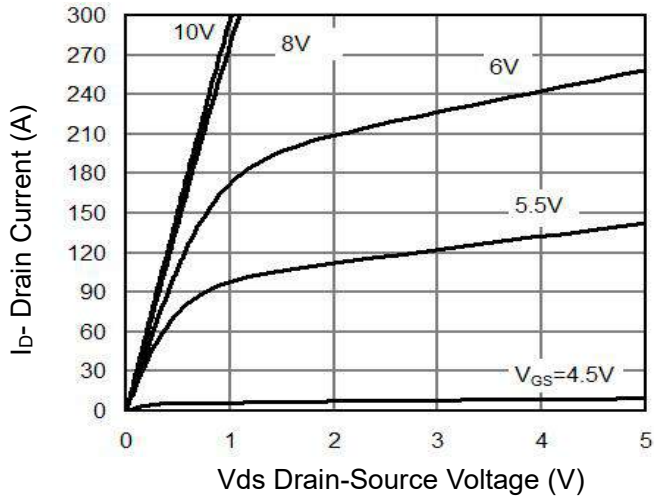


Figure 1 Output Characteristics

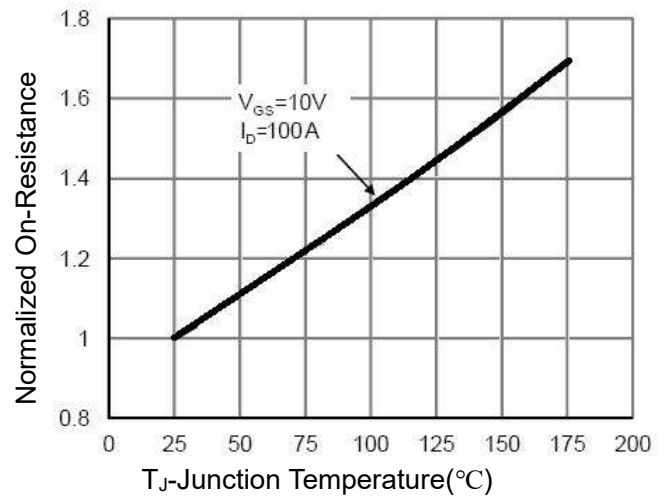


Figure 4 $R_{ds(on)}$ -Junction Temperature

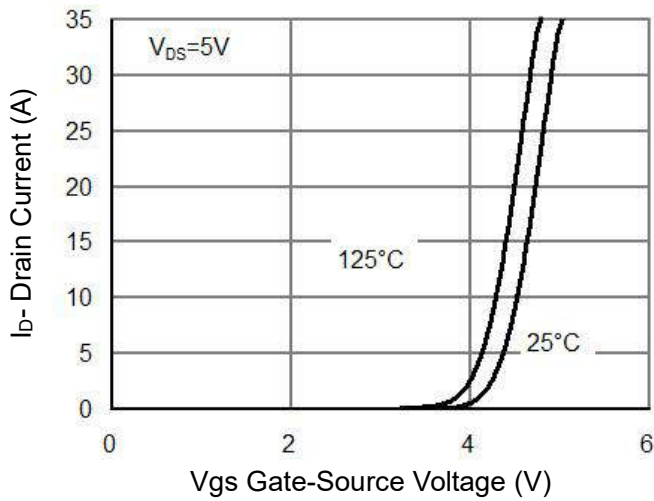


Figure 2 Transfer Characteristics

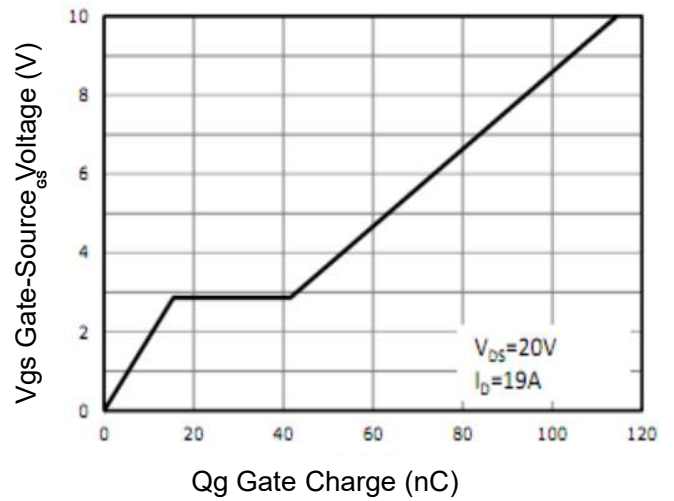


Figure 5 Gate Charge

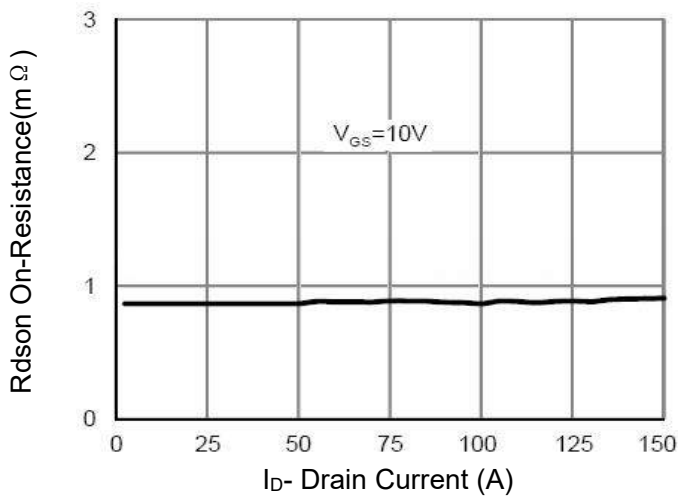


Figure 3 $R_{ds(on)}$ - Drain Current

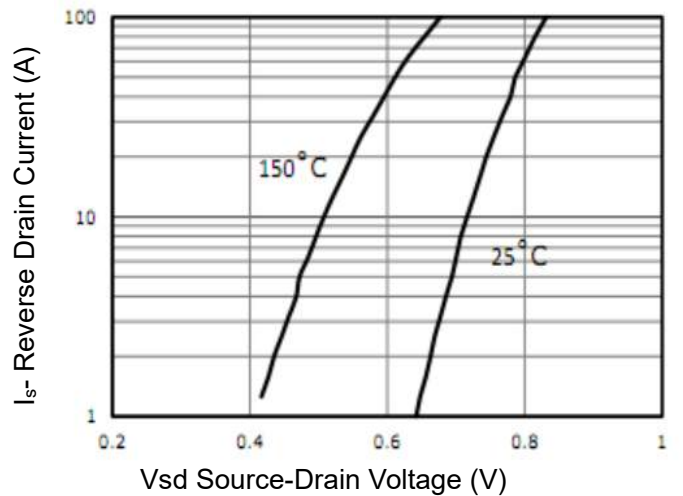


Figure 6 Source- Drain Diode Forward

Typical Electrical and Thermal Characteristics

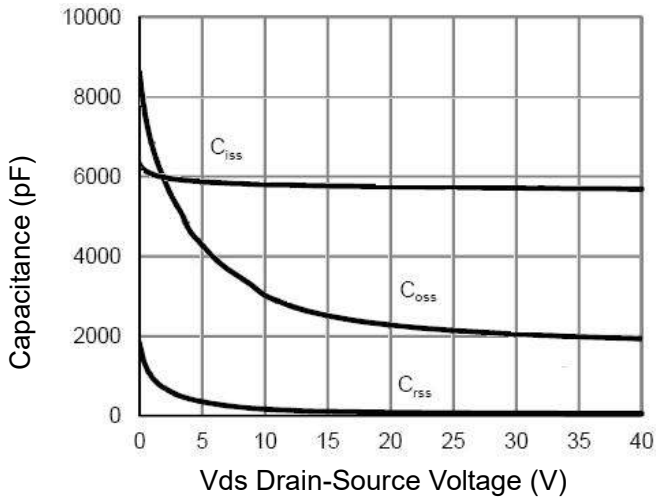


Figure 7 Capacitance vs Vds

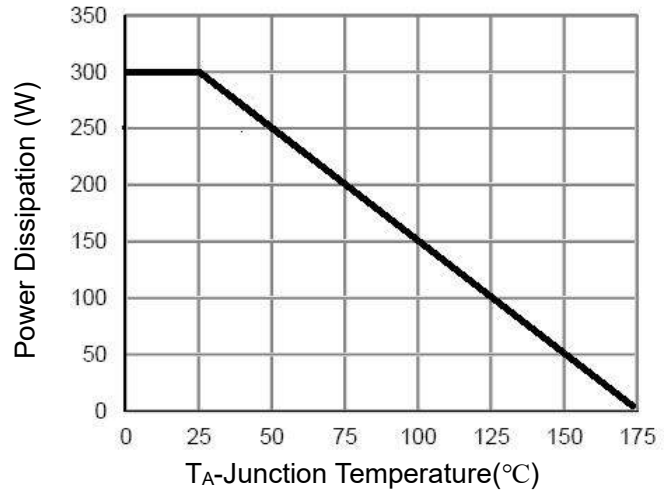


Figure 9 Power De-rating

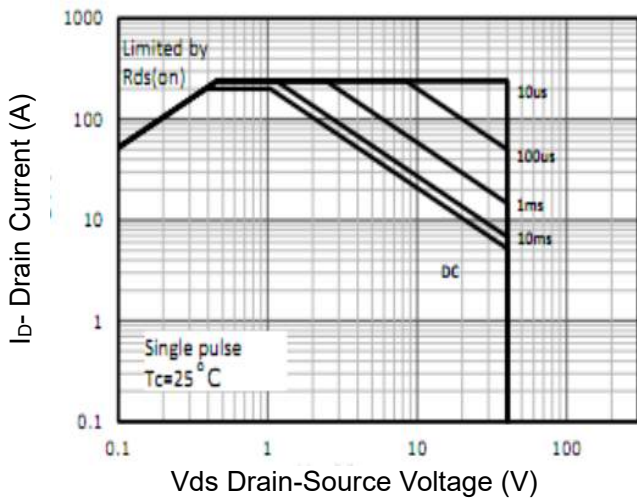


Figure 8 Safe Operation Area (Note3)

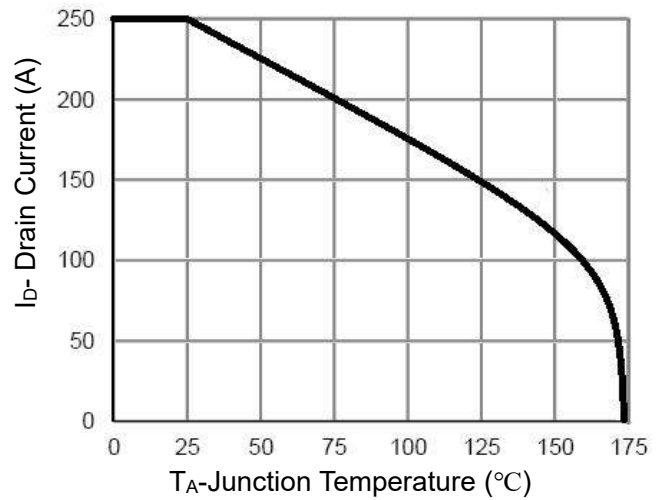


Figure 10 Current De-rating

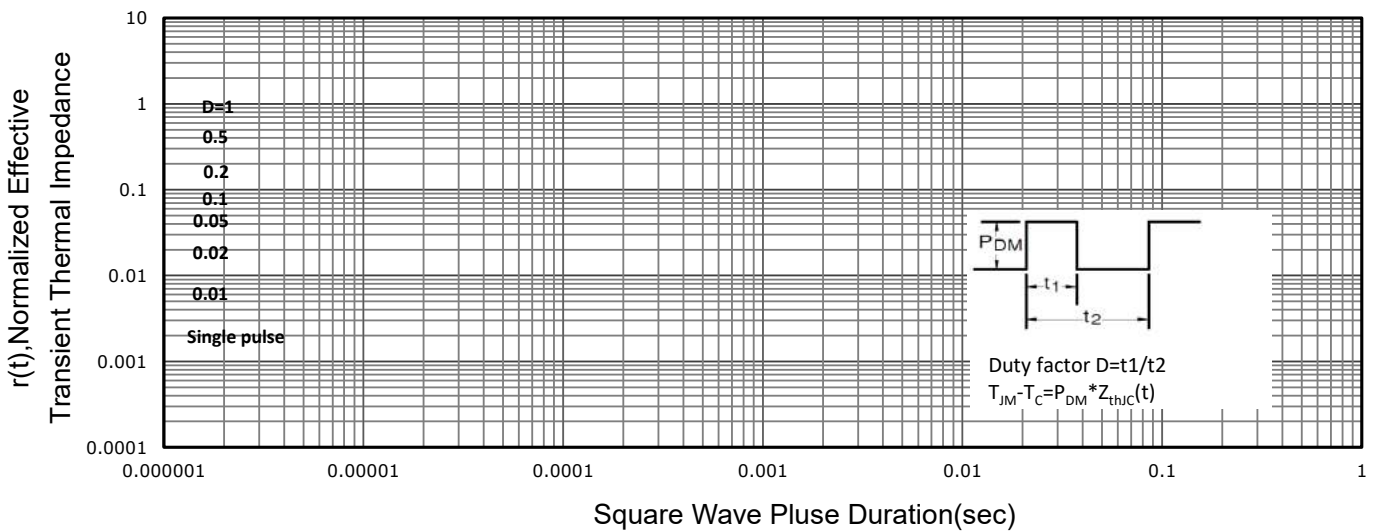
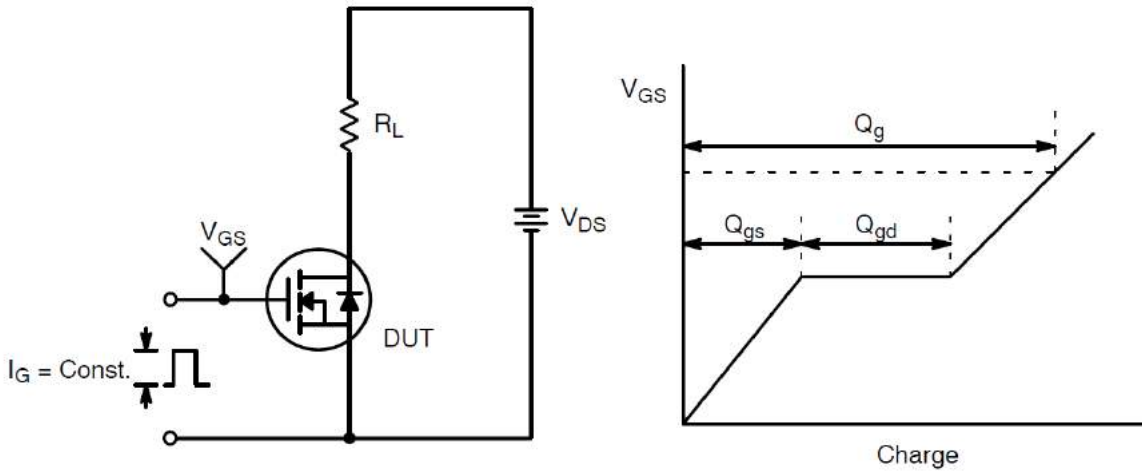
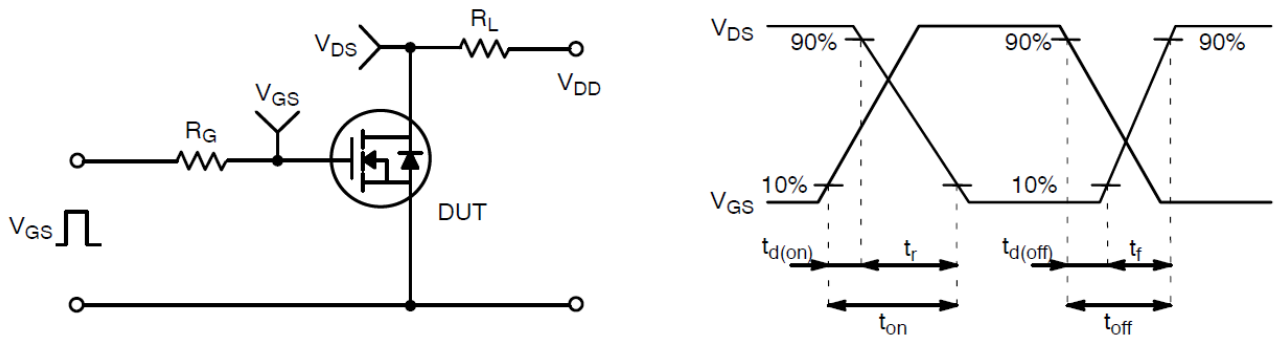


Figure 11 Normalized Maximum Transient Thermal Impedance

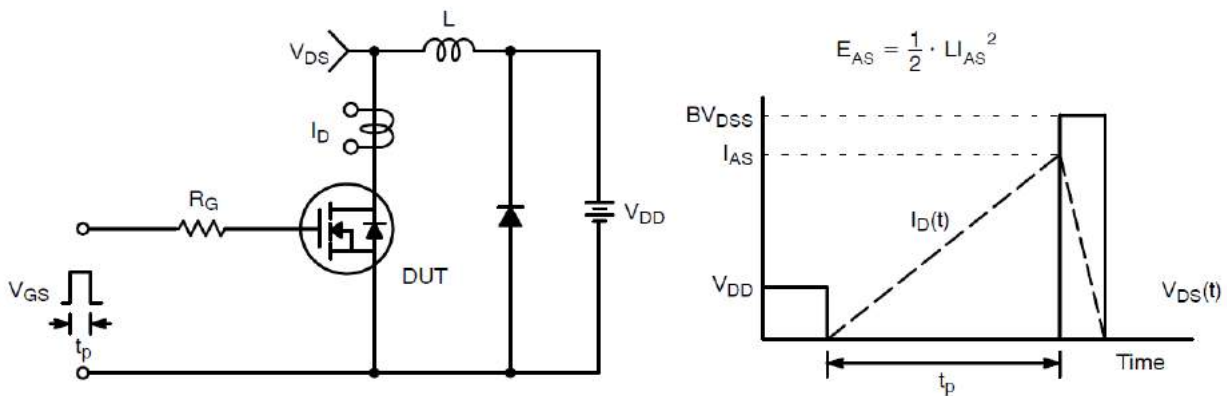
Test Circuit and Waveform:



Gate Charge Test Circuit & Waveform

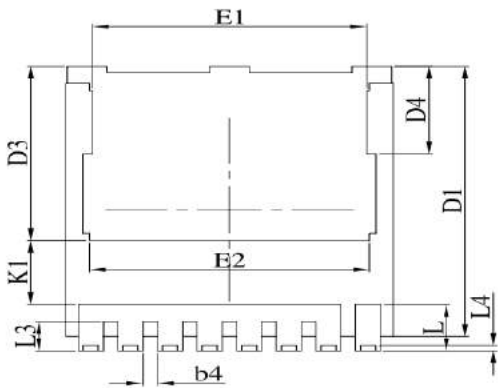
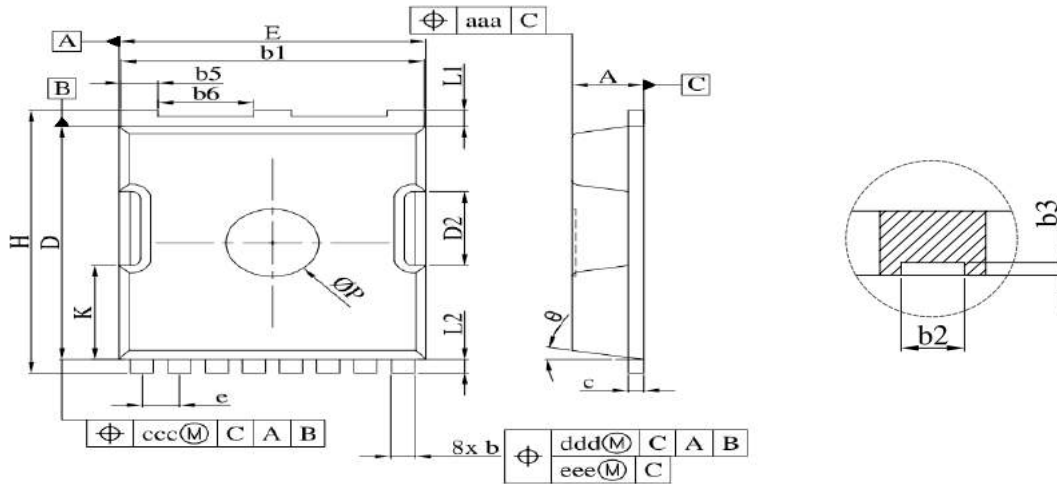


Resistive Switching Test Circuit & Waveforms



Unclamped Inductive Switching Test Circuit & Waveforms

TOLL-8L Package Information



SYMBOL	COMMON		
	MILLIMETER		
	MIN.	NOMINAL	MAX.
A	2.20	2.30	2.40
b	0.70	0.80	0.90
b1	9.70	9.80	9.90
b2	0.36	0.45	0.55
b3	0.05	0.100	0.35
b4	0.30	0.40	0.50
b5	1.10	1.20	1.30
b6	3.00	3.10	3.20
c	0.40	0.50	0.60
D	10.28	10.38	10.55
D1	10.98	11.08	11.18
D2	3.20	3.30	3.40
D3	7.00	7.15	7.30
D4	3.44	3.59	3.74
e	1.10	1.20	1.30
E	9.80	9.90	10.00
E1	8.20	8.30	8.40
E2	8.35	8.50	8.65
H	11.50	11.68	11.85
K	4.08	4.18	4.28
K1	2.45	---	---
L	1.60	1.90	2.10
L1	0.50	0.70	0.90
L2	0.50	0.60	0.70
L3	1.00	1.20	1.30
L4	0.13	0.23	0.33
P	2.85	3.00	3.15
θ	10° REF		
aaa	0.20		
ccc	0.20		
ddd	0.25		
eee	0.20		

Customer Service

Sales and Service:

zj@ztasemi.com